

NEW PRODUCT



BAB
TECHNOLOGIE



LOGIKMODULE

PLATFORM FOR IDEAS

LOGIKMODULE

PLATFORM FOR IDEAS



Including
KNX IP Router
functionality



Also available as
RF version



The implementation of a graphical editor based exclusively on state-of-the-art browser technologies opens up completely new possibilities for users and system integrators.

In the **LOGIKMODULE**, you programme your own control sequences (logic groups) with the graphical **LOGIKEDITOR** and integrate third-party applications with HTTP requests. Via the integrated REST interface, you control functions of the **LOGIKMODULE** and trigger KNX telegrams with external participants, for example. In addition to a simulation mode including time scaling as well as search and documentation functions, the **LOGIKEDITOR** also offers the option of loading and exporting logic groups. Download ready-made logic groups via our web platform logikeditor.de and use them directly in **LOGIKEDITOR**.

FASCINATING TECHNOLOGY

ALL ADVANTAGES IN DETAIL

VERSATILE

With little helpers – the so-called «Tools» – values between two elements can be modulated or filtered in a flash. The web-based interface makes the use of the **LOGIKEDITOR** operating system independent. Use the **LOGIKEDITOR** on almost all devices.

TWO ARE BETTER THAN ONE

Better safe than sorry. Before you transfer complex logic groups to the live system, simulate them step by step. A time lapse can shorten longer processes in seconds. The protocol recorded during the simulation will help you to detect possible errors.

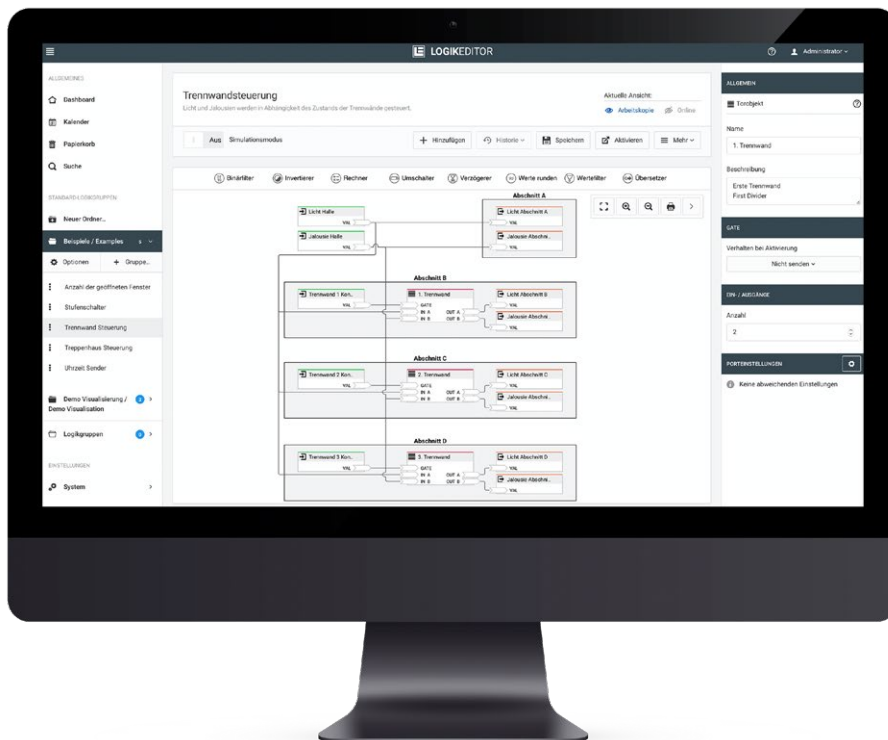
KEEP GOOD

Use the import and export functions of the **LOGIKEDITOR** to reuse your developed and tested logic groups in future projects. Become part of the community: Share your logic groups on logikeditor.de and benefit from the large collection of many handy user ideas yourself.

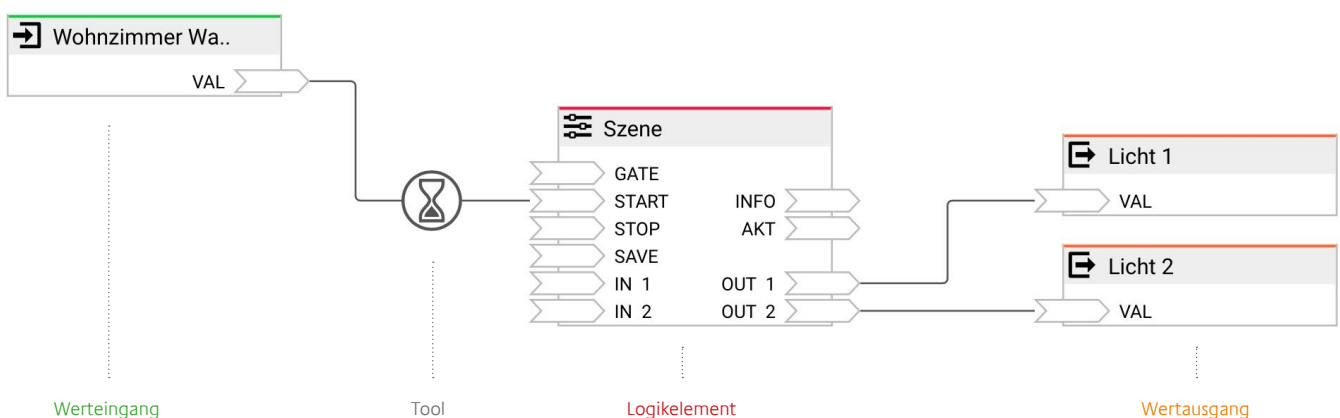
ADVANTAGES AT A GLANCE

- Easy usage via web browser
- Graphical linking of logic elements
- Switchable Operators (Tools)
- ETS project data import (.knxproj files)
- Unlimited number of data points
- Simulation including start time and time scaling
- In- and export of logic groups
- Search function incl. search of communication objects
- Configuration without affecting the current operation (working copies)
- Automatic restore points
- Context-sensitive help texts for logic elements
- Dashboard with important system information
- Editing history to restore past versions of logic groups

AUTOMATE & INTEGRATE GRAPHICAL LOGIKEDITOR



The **LOGIKEDITOR** is a web application for graphically creating logics and automation functions. The individual logic elements of the editor are connected by drawing lines between the corresponding connection points, also called «Logic».



Separate addressing is no longer necessary for your links, as these are generated from the drawn lines thanks to the **LOGIKEDITOR**. To create a logic group, you need 2 components: «Logic elements» and «Tools».

They can be connected to other elements or directly to value inputs or outputs. Value input and value output represent the interfaces of a logic group to the outside world. Each of these elements is linked to a data point - for example a KNX group address. With the KNX project import (from ETS 4), the group addresses of your installation are immediately available.

AUTOMATE & INTEGRATE GRAPHICAL **LOGIKEDITOR**



These logo elements are offered by the graphical **LOGIKEDITOR**:

- Astro Clock
- Binary Logic
- Data converter
- E-mail sender
- Fixed value / initialisation
- HTTP request
- Calendar
- Mathematics
- New: REST API
- Collective message
- Threshold
- Statistics
- Scene
- Text Processor
- Gate object
- Transformer
- Staircase automat
- Comparator
- Distributor
- Delayer
- Value memory
- Value read
- Weekly clock
- Timer
- Cyclic transmitter

All logic elements can be graphically linked with each other.

With the help of »Tools«, these connections can be modulated at lightning speed:

- Binary filter
- Inverter
- Calculator
- Toggle switch
- Round values
- Delayers
- Value filter
- Translator

OVERVIEW

TECHNICAL SPECIFICATIONS

- Operating voltage: 12–32 V DC
- Typical power consumption 300 mA at 12 V DC
- Power consumption: ≤ 5 W
- Connection: screw-type plug-in terminal
- Climate resistant: EN 50090-2-2
- Ambient temperature: -5 to $+35$ °C
- Relative humidity (non-condensing): 5 % to 80 %.

Mechanical data:

- Mounting: MDRC 4 MW
- Dimensions (W x H x D) in mm: 72 x 90 x 63
- Housing: Plastic
- Protection class: IP20 (according to EN 60529)

Interfaces (depending on variant):

- Ethernet: RJ45 socket
- KNX: Twisted Pair via screw plug terminal block
- EnOcean: external SMA antenna

EnOcean specifications:

- Operating frequency: 868.3 Mhz
- Range: 300m outdoors / 30m indoors (construction material dependent)
- Input objects: Any number of
- Output objects: 128
- External antenna: 2.50 m cable, magnetic base and SMA plug

Art. no. 10571	LOGIKMODULE IP	
Art. no. 10575	LOGIKMODULE KNX	
Art. no. 13571	LOGIKMODULE EnOcean	

«Solve complex control tasks by
Drag'n'Drop. Easy and well-organised –
with the **LOGIKMODULE.**»

everywhere at home



BAB TECHNOLOGIE GmbH
Hörder Burgstraße
44263 Dortmund
Germany

Phone: +49 231 476425-30
Fax: +49 231 476425-59
Email: info@bab-tec.de
Internet: www.bab-tec.de