



BAB TECHNOLOGIE GmbH

HOOC Client APP Documentation

Version of manual I
As from 12/2021
Date: 22. December 2021

EN



BAB TECHNOLOGIE GmbH

Hörder Burgstr. 18
D-44263 Dortmund

info@bab-tec.de

Tel.: +49 (0) 231 – 476 425 - 30
Fax.: +49 (0) 231 – 476 425 - 59
www.bab-tec.de



TABLE OF CONTENT

- 1 Introduction..... 5**
- 2 HOOC Client APP / Remote Access..... 5**
 - 2.1 HOOC clients / HOOC Portal.....5
 - 2.1.1 HOOC Client App (general).....7
 - 2.1.2 Remote – HOOC Client APP (Android)8
 - 2.1.3 Remote – HOOC Client APP (apple iOS)9
 - 2.1.4 HOOC Client APP – auto Login 10
 - 2.1.5 Automatic forwarding HOOC Client APP to CUBEVISION 2 APP 11



LIST OF FIGURES

Figure 1: HOOC portal - Management of Sites	5
Figure 2: HOOC portal - EIBPORT information and status.....	5
Figure 3: HOOC portal - HOOC Gateway Configuration.....	6
Figure 4: HOOC portal - HOOC Client.....	6
Figure 5: HOOC portal - Redirections to client	7
Figure 6: HOOC Portal - Redirection client OS Android	8
Figure 7: Android device - HOOC Client APP settings.....	8
Figure 8: HOOC Client iOS APP – Redirection	9
Figure 9: iOS HOOC Client - APP	9
Figure 10: HOOC Client APP - auto login	10
Figure 11: HOOC Client APP - auto login if connected	10
Figure 12: Automatic opening of the CUBEVISION 2 APP	11



1 INTRODUCTION

The pre-installed HOOC Services in the EIBPORT, CUBEVISIONMODULE are a convenient "Plug & Play" VPN solution for your secure remote access. The establishment of a port forwarding or a fixed IPv4 address is a thing of the past. No additional hardware is required.

Our partner for this development is company HOOC AG. HOOC AG is an internationally active company located in Switzerland.

2 HOOC CLIENT APP / REMOTE ACCESS

There is a detailed description for setting up the HOOC services in your devices. Following is described only the use of the HOOC service with the CUBEVISION 2 APP in order to provide you convenient and secure remote access.

2.1 HOOC CLIENTS / HOOC PORTAL

If your EIBPORT, CUBEVISIONMODULE has been activated for the HOOC remote access, you can now establish the remote connections to other devices. For this purpose, different applications with diverse operating systems are available to you.

The setup and establishing of these remote connections is done with just a few clicks.

From the site facility management in your HOOC Portal account go to the desired facility. Here you open the symbol "change to the site" by Action.

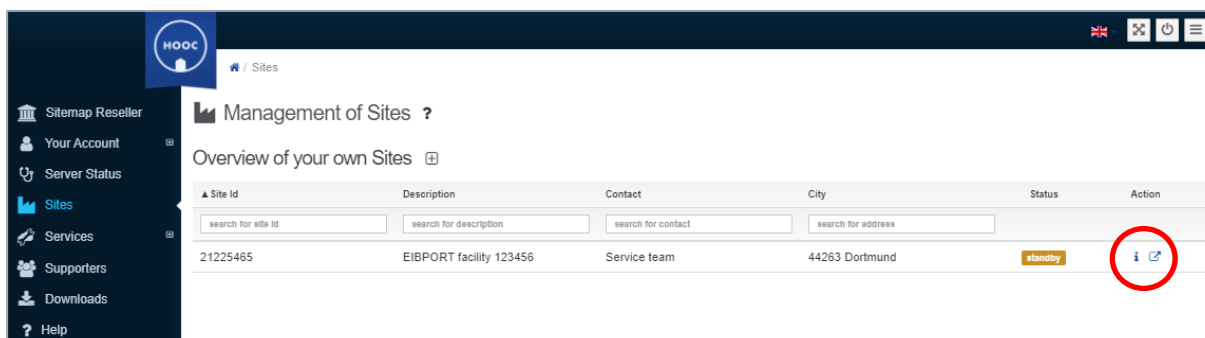


Figure 1: HOOC portal - Management of Sites

It opens the window of your selected facility. Here you can see the status of the device. The extension icon "License Type" lists the characteristics of your license.

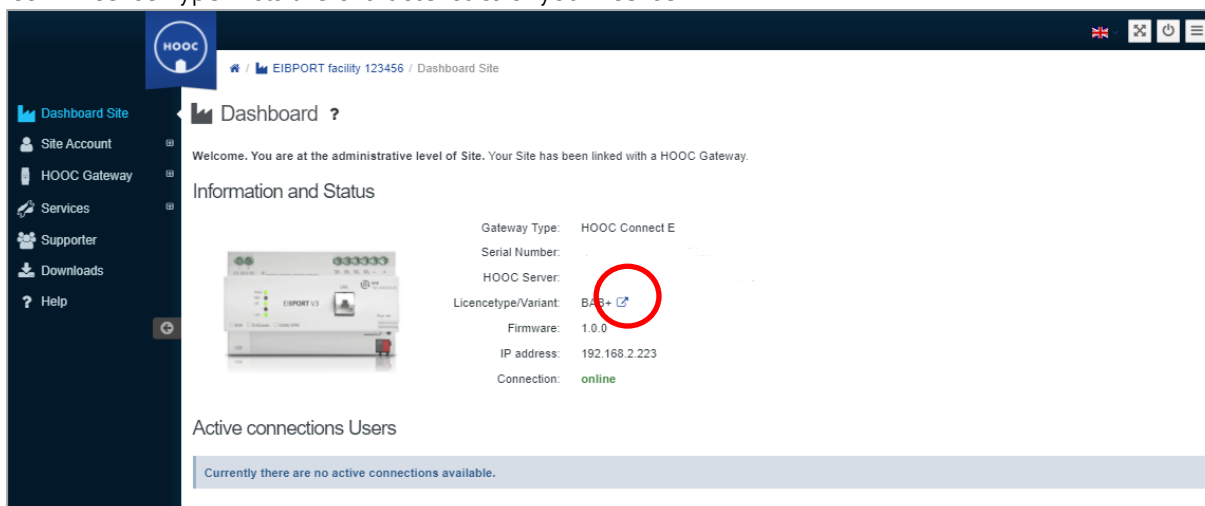


Figure 2: HOOC portal - EIBPORT information and status

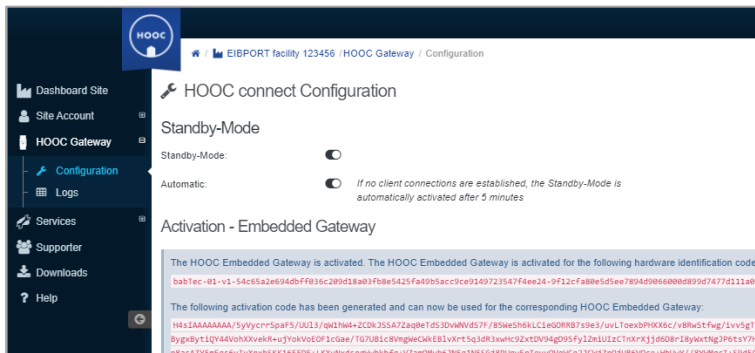


Figure 3: HOOC portal - HOOC Gateway Configuration

Settings for your activation can be found when you open the submenu of "HOOC Gateway". Here you can see the HARDWARE ID (1) and the activation key (2).

In the left menu bar, under Services you will find more submenus. The submenu "Services" contains, among other things, the necessary settings for your clients in the menu item "Remote Access".

Under the menu item "Client" you will find information about interfaces and the links of the respective applications that can be integrated with HOOC Client Apps.

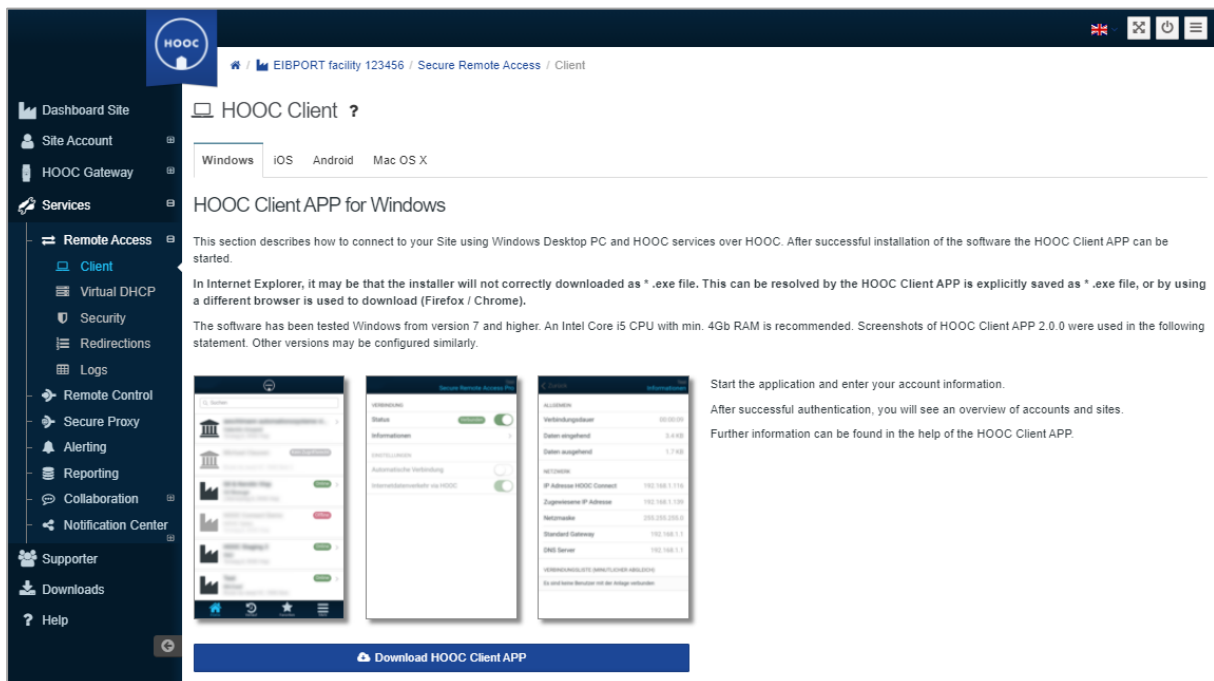


Figure 4: HOOC portal - HOOC Client



2.1.1 HOOC CLIENT APP (GENERAL)

For easy and as well fast connection of your EIB**PORT**, **CUBEVISION**MODULE via HOOC VPN, you can set up forwarding to your Android devices. This makes it easy to establish a secure remote connection to your device with installed CUBEVISION APP 2.

As described above, you go directly to the desired site (your EIB**PORT**), to the services and to the menu item "Redirections" via the management of sites.

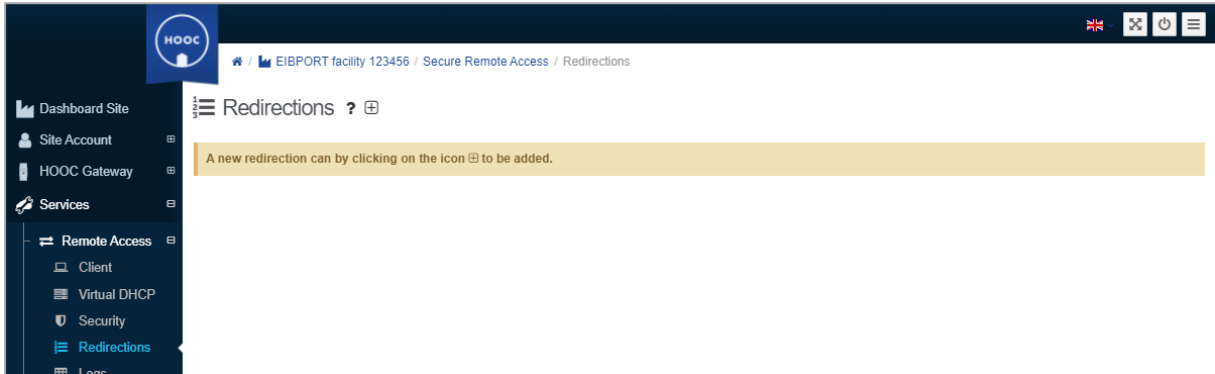


Figure 5: HOOC portal - Redirections to client

Now you can add the desired redirect with "+". Please note the settings of the different operating systems.

2.1.2 REMOTE – HOOC CLIENT APP (ANDROID)

The following is a description of setting up a mobile device with OS Android and using CUBEVISION 2 APP.

Add the desired redirection with "+". The following data must now be entered:

Target: select "android"

Type: set to "app"

Description: Your free device name

Link - to enter here: de.babtec.cvmobile2.app

Confirm the data by the check mark at the end of the line. If the data is correct, they will be shown that the forwarding has been set up. Otherwise, you need to correct.

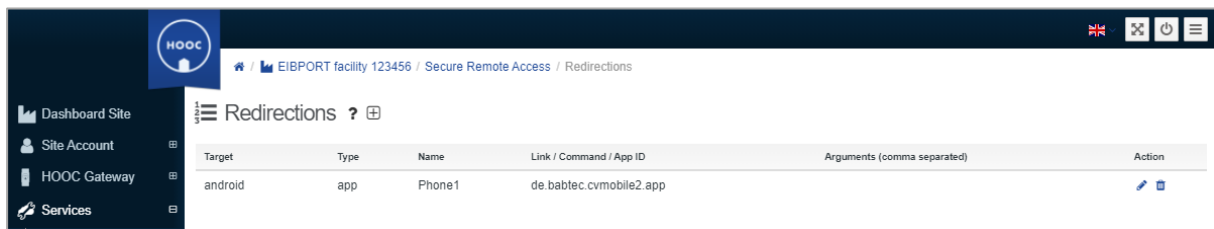


Figure 6: HOOC Portal - Redirection client OS Android

Now the connection is setting up on your Android device:

Install the HOOC Client APP on your Android device. Log in with your HOOC Portal access data.

After logging in, your EIBPORT (facility) will be displayed, which is also available online. Go to the icon for <next>. The icon <next> in "Secure Remote Access" you can access the connection settings of your EIBPORT (facility). Now the status switch is to be activated, so that VPN is activated. The VPN availability is also displayed in the status indicator of the Android device.

This puts you in "Secure Remote Access" mode.

Finally, go to the REDIRECTIONS that you have created in the HOOC portal.

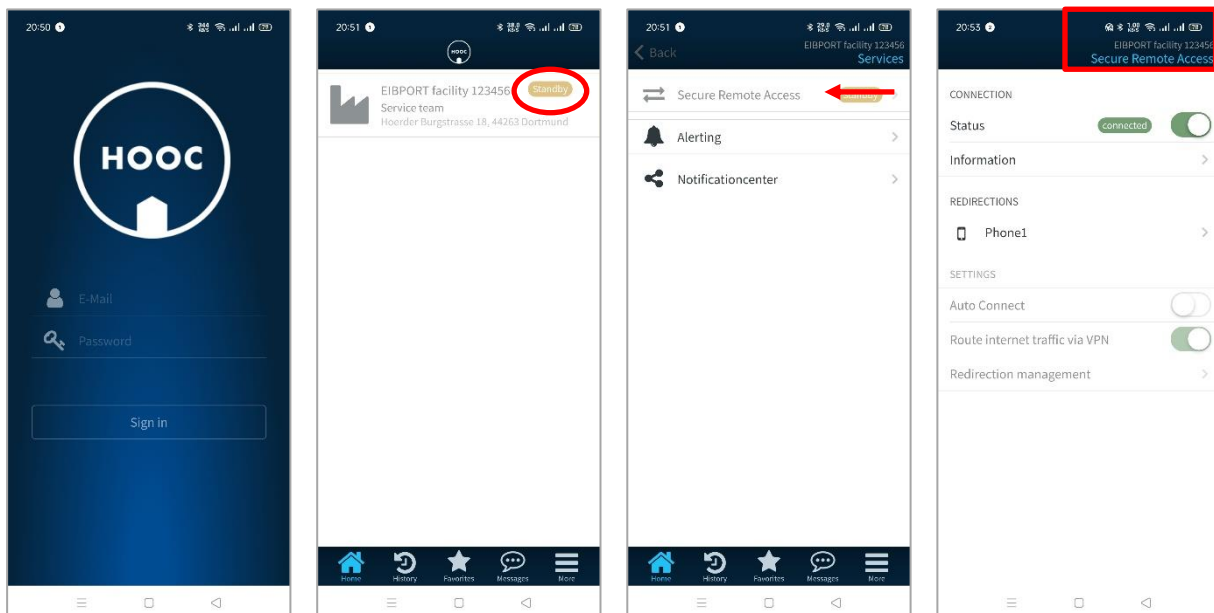


Figure 7: Android device - HOOC Client APP settings

This takes you directly to the CUBEVISION 2 APP for the visualization of your system.

Without specific arguments in the forwarding settings, only the profile for a CUBEVISION 2 APP is created in the Android device.



2.1.3 REMOTE – HOOC CLIENT APP (APPLE IOS)

The following is a description of setting up a mobile device with APPLE iOS and using CUBEVISION 2 APP:

Add the desired redirect with "+". The following data must now be entered:

- Target: select "ios"
- Type: set to "app"
- Name: Your device name
- Link - enter here: `cubevision://`

Confirm the data by the check mark at the end of the line. If the data is correct, they will be shown that the forwarding has been set up. Otherwise, you need to correct.

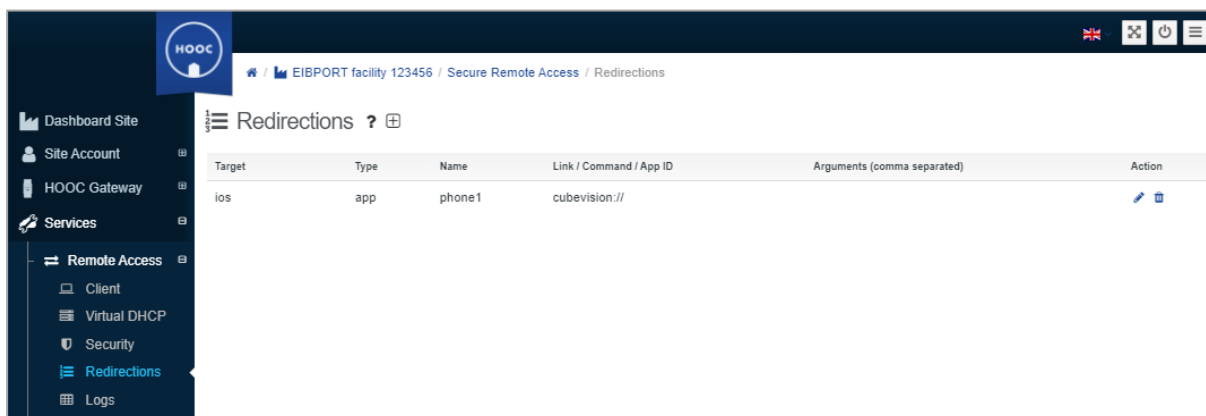


Figure 8: HOOC Client iOS APP – Redirection

Now the connection is set up on your iOS device:

Install the HOOC Client APP on your iOS device. Log in with your HOOC Portal access data.

After logging in, your facility will be displayed, which is also available online. Go to the icon for <next>. Via icon <next> in "Secure Remote Access" you can access the connection settings of your facility. Now the switch is to be activated in the status, so that VPN is activated. The VPN availability is also displayed in the status of the iOS device.

This puts you in "Secure Remote Access" mode.

Finally, go to the REDIRECTIONS that you have created in the HOOC portal.

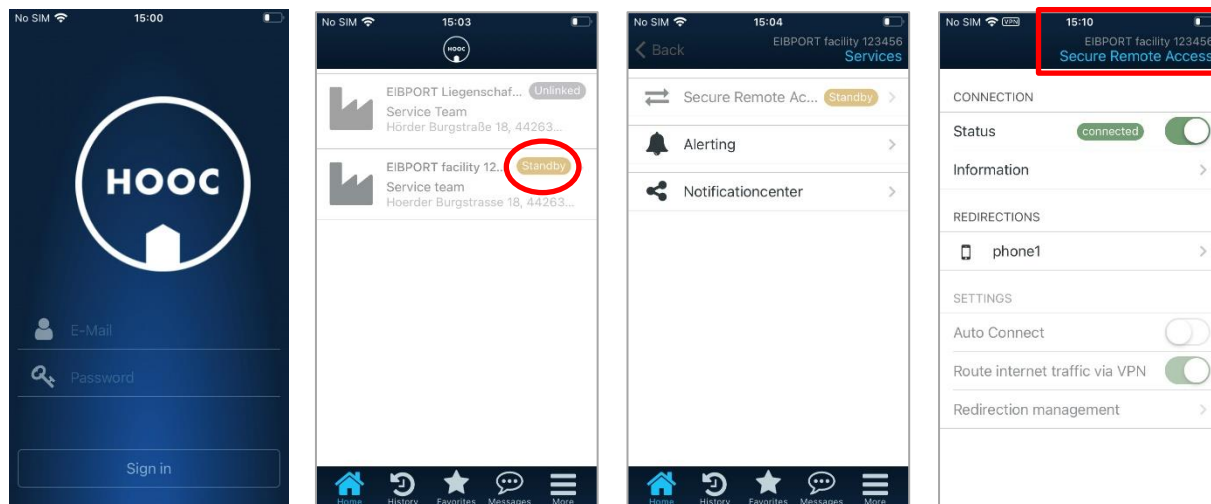


Figure 9: iOS HOOC Client - APP

This takes you directly to the CUBEVISION 2 APP for the visualization of your facility.

Note: It is important to make sure that your CUBEVISION 2 APP has higher version than 2.2.6, otherwise this internal link will not be forwarded, and you have to make the settings manually.

Without specific arguments in the forwarding settings, only the profile for a CUBEVISION 2 APP is created in the iOS device.

2.1.4 HOOC CLIENT APP – AUTO LOGIN

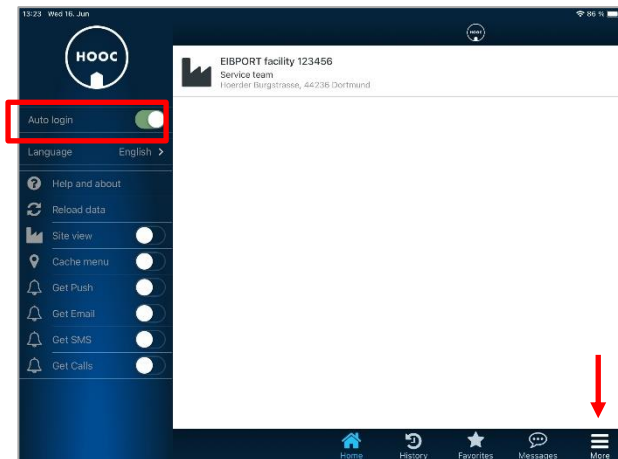


Figure 10: HOOC Client APP - auto login

For the quick and easy handling of the HOOC Client APP (Android / iOS) an automatic login can be activated.

To do this, go via the menu item "More". Then the left extension menu opens.

Here you have to activate "Auto Login" only.

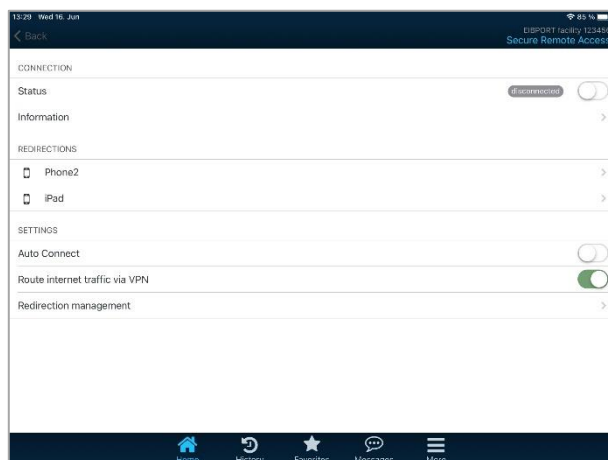


Figure 11: HOOC Client APP - auto login if connected

If the connection to the EIBPORT, **CUBEVISIONMODULE** (Gateway) enabled, the extension menu is hidden. Thus, you must first deactivate the connection status. Then the extension menu will be displayed and you can activate "Auto Login".



2.1.5 AUTOMATIC FORWARDING HOOC CLIENT APP TO CUBEVISION 2 APP

For convenient use of the CUBEVISION 2 APP with the HOOC service, you can configure the forwarding of the HOOC client so that the CUBEVISION 2 APP opens when the HOOC APP is activated. With one click only you are in your building control.

The prerequisite is that you have activated “Auto login”.

Activate “Auto Connect” via the “Secure Remote Access” menu on your device and go to “Redirection management”. Enable your device here.

Go back in the menu and activate the "Status" on connect. You will now be forwarded to the CUBEVISION 2 APP.

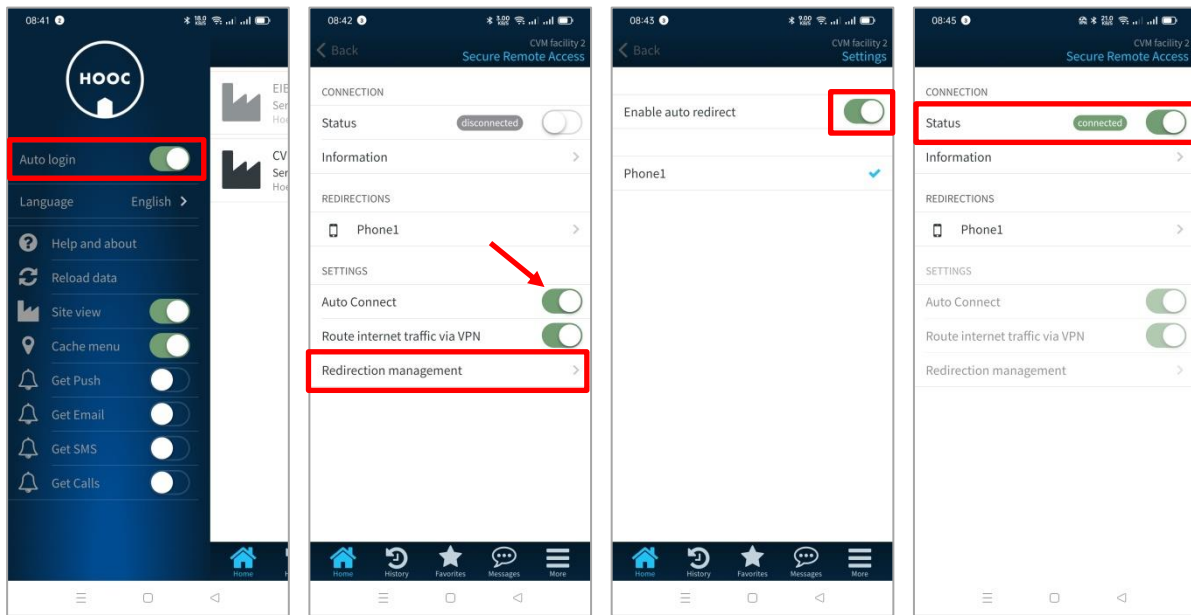


Figure 12: Automatic opening of the CUBEVISION 2 APP

Each time the HOOC APP is going to open, the automatic forwarding takes place and the CUBEVISION 2 APP opens.