



BAB TECHNOLOGIE GmbH

# **BAB STARTER**

## Documentation

Version: 1.1.2  
Type: Software

Manual version V  
As of 05/2021  
Date: 26. May 2021

EN



BAB TECHNOLOGIE GmbH

Hörder Burgstr. 18  
44139 Dortmund

[info@bab-tec.de](mailto:info@bab-tec.de)

Tel.: +49 (0) 231 – 476 425 - 30  
Fax: +49 (0) 231 – 476 425 - 59  
[www.bab-tec.de](http://www.bab-tec.de)



# TABLE OF CONTENTS

<b>1</b>	<b>Introduction.....</b>	<b>5</b>
1.1	Range of functions.....	5
1.2	Important information on the operating instructions.....	6
<b>2</b>	<b>Installation.....</b>	<b>7</b>
2.1	Microsoft Windows installation.....	7
2.2	MAC OS X installation.....	9
<b>3</b>	<b>Startscreen.....</b>	<b>13</b>
3.1	Visited devices.....	13
3.2	Search for devices.....	14
3.3	Add devices manually.....	15
3.4	Test virtual devices.....	15
3.5	Settings.....	16
	Speed up EIBPORT start.....	16
	Logs.....	16
3.6	About BAB STARTER.....	17
<b>4</b>	<b>Devices menu.....</b>	<b>18</b>
4.1	Device menu EIBPORT.....	18
	Default Start Page.....	18
	Firmware Update.....	19
4.1.1	Java based Application of the EIBPORT.....	19
4.1.2	details for EIBPORT.....	19
	Change network settings.....	19
	Check settings.....	20
	Clear cache.....	20
	Autostart Settings.....	20
	Deposit Credentials.....	21
4.2	Device menu CUBEVISION MODULE.....	22
4.2.1	Details for CUBEVISIONMODULE.....	22
	Clear cache.....	22
	Change network settings.....	23
	Store registration data.....	23
4.2.2	Device menu for CUBEVISION MODULE – Start.....	23
4.3	Device menu for web-based BAB TECHNOLOGIE devices.....	24
	Change network settings.....	24
	Store registration data.....	24



# LIST OF FIGURES

Figure 1: Windows setup icon .....	7
Figure 2: Windows InstallShield Wizard .....	7
Figure 3: Windows installation index .....	8
Figure 4: Check and start Windows setup .....	8
Figure 5: Finish Windows installation .....	9
Figure 6: Windows Start menu entry .....	9
Figure 7: MAC OS X security settings .....	10
Figure 8: MAC OS X installation process – introduction .....	10
Figure 9: MAC OS X installation process – licence agreement .....	11
Figure 10: MAC OS X installation process – select place of installation .....	11
Figure 11: MAC OS X installation process – start installation .....	12
Figure 12: MAC OS X – BAB STARTER program icon .....	12
Figure 13: BAB STARTER Main menu .....	13
Figure 14: Delete visited devices .....	13
Figure 15: Search for devices .....	14
Figure 16: Add device manually .....	15
Figure 17: BAB STARTER settings .....	16
Figure 18: About BAB STARTER .....	17
Figure 19: Device menu for EIBPORT .....	18
Figure 20: Device menu for EIBPORT – details .....	19
Figure 21: Activate autostart .....	21
Figure 22: Disable autostart .....	21
Figure 23: Device menu for CUBEVISIONMODULE .....	22
Figure 24: Device menu for CUBEVISIONMODULE – details .....	22
Figure 25: Device menu for web-based BAB TECHNOLOGIE devices .....	24



# 1 INTRODUCTION

The BAB STARTER is a platform-independent program for central access to all BAB TECHNOLOGIE devices. Additionally, the java based editors of the products **EIBPORT**, **CUBEVISIONMODULE**, **FACILITYMASTER** and the EnOcean Editors of **CUBEVISIONMODULE** and **LINKMODULE** can be started independently of a local Java installation.

## 1.1 RANGE OF FUNCTIONS

The BAB STARTER offers the following functionalities (references to the relevant chapters in brackets):

- Search for devices ("[Search for devices...](#)")
- Add devices manually ("[Add devices manually...](#)")
- Test virtual devices ("[Test virtual devices...](#)")
- Display device details ("[Devices](#) menu")
- Changes to **EIBPORT** network settings ("[Change network settings](#)")
- Review of the most important **EIBPORT** parameters ("[Check settings](#)")
- Call up **EIBPORT** JAVA CONTROL view
- Call up **EIBPORT** CONTROL L view
- Call up **EIBPORT** CUBEVISION view
- Call up **EIBPORT** Editor
- Call up **EIBPORT** System
- Call up **CUBEVISIONMODULE** CUBEVISION view ("[Device menu for CUBEVISION MODULE – Start...](#)")
- Call up **CUBEVISIONMODULE** Editor ("[Device menu for CUBEVISION MODULE – Start...](#)")
- Call up **CUBEVISIONMODULE** configuration ("[Device menu for CUBEVISION MODULE – Start...](#)")
- Accelerate **EIBPORT** Start
- Autostart for the **EIBPORT** JAVA CONTROL Visualisation

The following devices are displayed in the BAB STARTER:

- **EIBPORT**
- **CUBEVISIONMODULE**
- **APPMODULE**
- **DATALOGGER**
- **KNXEASY**
- **AUDIOMODULE**
- **AUDIOSERVER**
- **INTERCOMMODULE**
- **LINKMODULE**
- **ELMMODULE**
- **DUODMX GATEWAY**
- **FACILITYMASTER**

Note (Tip 1): For the above mentioned devices, with firmware version since November 2019, it is now possible to carry out network configuration from other network areas. The **DUODMX GATEWAY**, **AUDIOMODULE**, **DATALOGGER** and the **KNXCONVERTER** are excluded from this. Now it isn't necessary to adapt your configuration PC to the factory IP-settings of the respective devices in order to change them to the required IP address range.

Note (Tip 2): For efficient and flexible work we recommend opening several applets at the same time. If an applet is accidentally closed, you have immediate access to your devices and don't have to open the BAB STARTER again.



---

## 1.2 IMPORTANT INFORMATION ON THE OPERATING INSTRUCTIONS

---

Please be aware that all the statements and illustrations in these operating instructions are non-binding. In the interests of our customers, the software described in these operating instructions is being constantly developed further. Therefore, the information provided in these operating instructions may no longer be accurate under certain circumstances. Information on the current BAB STARTER software and also on this description ("BAB STARTER documentation") can be found at <https://www.bab-tec.de/index.php/bab-starter-en.html>.



## 2 INSTALLATION

Load the BAB STARTER setup file from our website.

<http://bab-tec.de/index.php/bab-starter-en.html>

For Microsoft Windows you receive a \*.zip file to download. For MAC OS X, a \*.mpkg file is available. If you use Linux, please contact us for installation advice ([info@bab-tec.de](mailto:info@bab-tec.de)).

### 2.1 MICROSOFT WINDOWS INSTALLATION

- Extract the downloaded \*.zip file into a folder of your choice and click on the "BAB\_STARTER\_[Version]\_setup.exe" to start the installation.

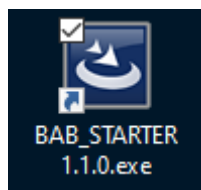


Figure 1: Windows setup icon

- The installation routine prepares the installation process and then displays the InstallShield Wizard. Follow the instructions and click on "Continue".

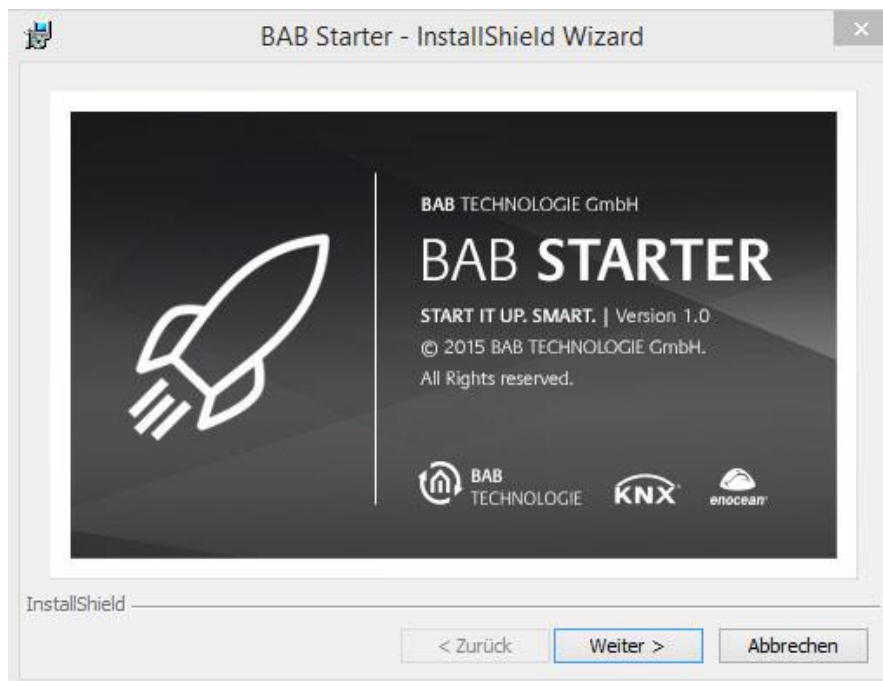


Figure 2: Windows InstallShield Wizard

- Read the licence agreement and accept it using the appropriate button. Click on "Continue".

- Choose the correct installation index for the BAB STARTER.



Figure 3: Windows installation index

- Review the setup settings and click on "Install".



Figure 4: Check and start Windows setup

- The installation process starts. In some Windows systems, a user account management dialogue appears. Confirm the notification with "YES".





- After successful installation, the InstallShield Wizard notifies you of the success. Confirm with "Finish".



Figure 5: Finish Windows installation

Thereafter, the BAB STARTER can be found in the Windows Start menu under "BAB TECHNOLOGIE GmbH".

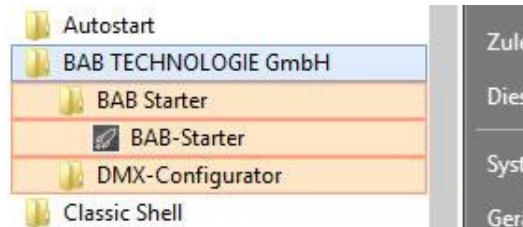


Figure 6: Windows Start menu entry

## 2.2 MAC OS X INSTALLATION

Double click on "BAB STARTER\_[Version].mpkg".



BAB STARTER.mpkg

It is possible that your system will advise you of a non-verified developer. In this regard, please note the information on the "Apple Gatekeeper":

"With Gatekeeper, you have more control over what you install. You can choose the safest option and allow only apps that come from the Mac App Store to be opened. With the standard option, only apps that come either from the Mac App Store or from verified developers will be allowed. Or you can choose for all apps to be opened, as in the previous versions of OS X. You can find the options for Gatekeeper in the menu under "Apple" > "System settings..." > "Security" > "General" under the heading "Allow programs from the following sources:""

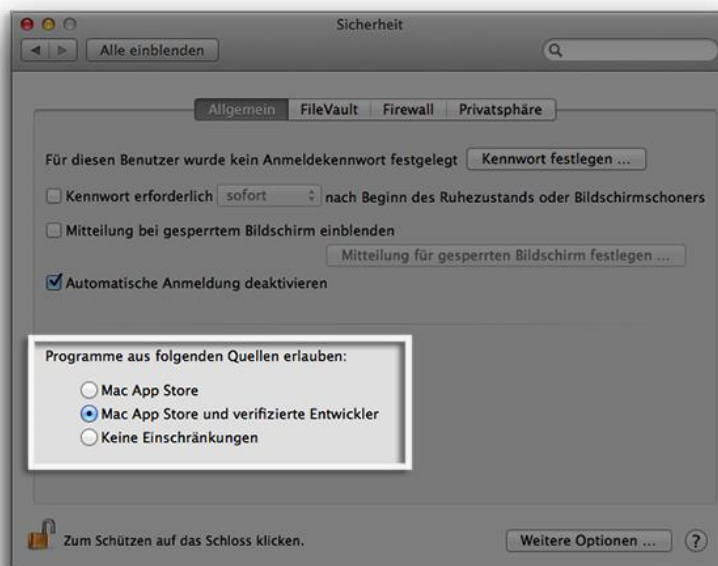


Figure 7: MAC OS X security settings

[Taken from <https://support.apple.com/de-de/HT202491>, 05/10/2015]

Once you have allowed the execution of the setup file in this way and have executed the file, you will be led through the installation process.

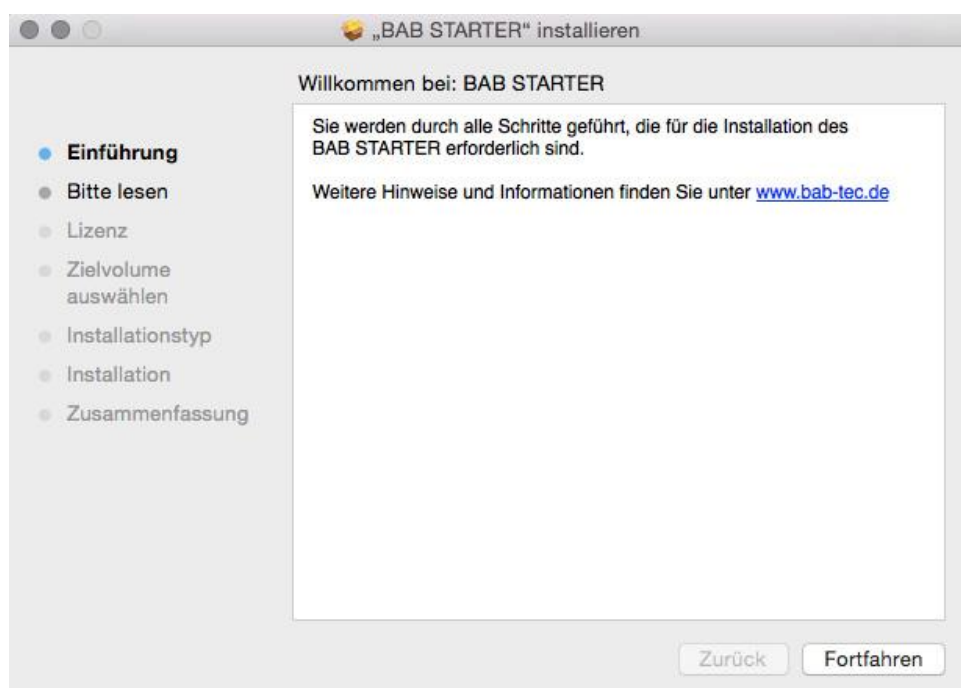


Figure 8: MAC OS X installation process – introduction



- Click on "Continue" to continue the installation.

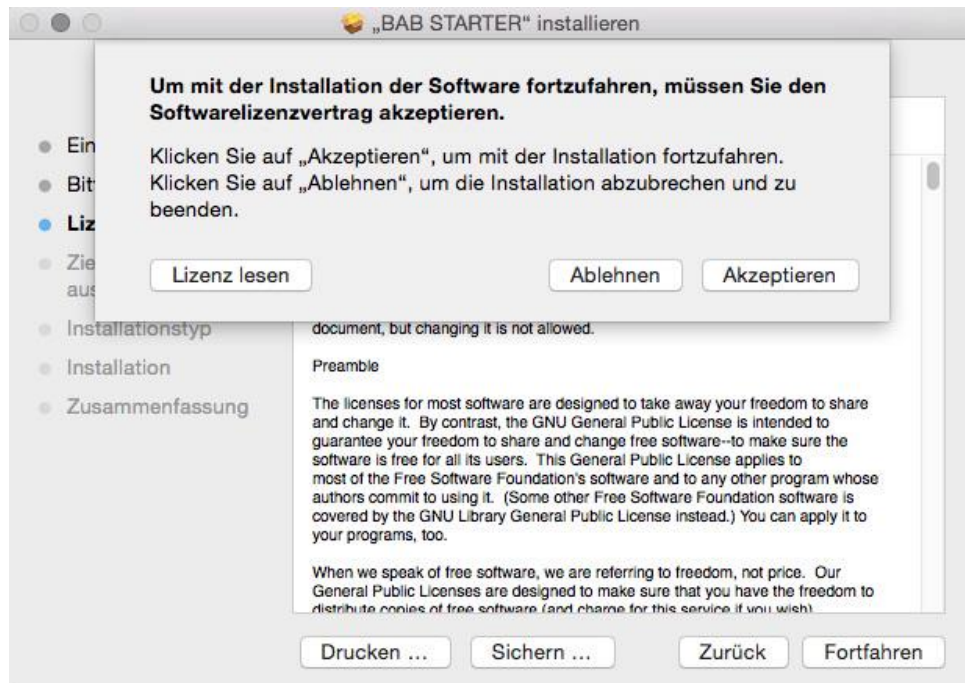


Figure 9: MAC OS X installation process – licence agreement

- Please take note of the licence agreements and confirm them by clicking on "Accept". You can then select a different place of installation if you wish:



Figure 10: MAC OS X installation process – select place of installation

- Click on "Install" and confirm the action with the user authentication.

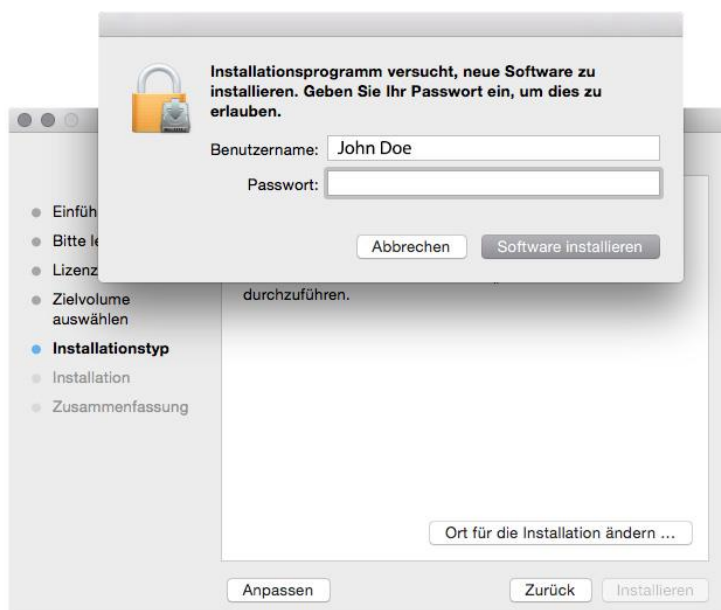


Figure 11: MAC OS X installation process – start installation

The message "The installation was successful" confirms the successful installation. The BAB STARTER symbol now appears in the "Programs" folder.



Figure 12: MAC OS X – BAB STARTER program icon



## 3 STARTSCREEN

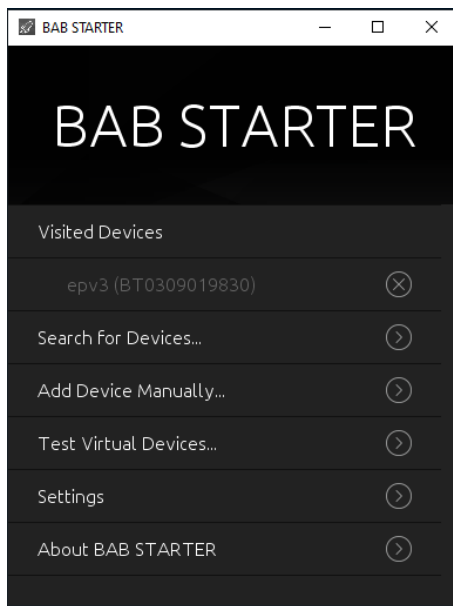


Figure 13: BAB STARTER Main menu

- [Visited devices](#) (only if BAB STARTER was used already)
- [Search for devices...](#)
- [Add devices manually...](#)
- [Test virtual devices...](#)
- [Settings](#)
- [About BAB STARTER](#)

### 3.1 VISITED DEVICES

Already visited devices will be automatically shown in the list of visited devices. The availability of the devices will be automatically proved during the start of BAB STARTER.

#### Delete entries

In order to delete no longer used entries from the list, please use a right click on the desired entry. With the “delete” function the corresponding entry will be erased.

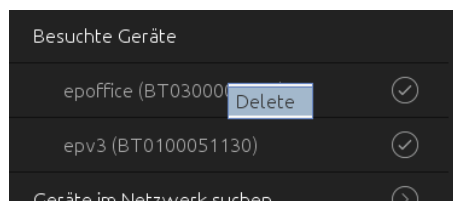


Figure 14: Delete visited devices

## 3.2 SEARCH FOR DEVICES...

The BAB STARTER is searching in local networks. Local networks devices which are connected to each other via a router. Other or virtual networks are not searched. The BAB TECHNOLOGIE devices available in the network are displayed with their serial number and individual device name ("Devices found"). Depending on the availability, the devices are marked.



All devices marked with this are accessible in the system and can be used further.



All devices with a cross marked are currently not accessible in the system. It can be devices that have already been registered but are currently not accessible. Or the devices have not yet been set up for access in the system, e.g. with incorrect IP address.

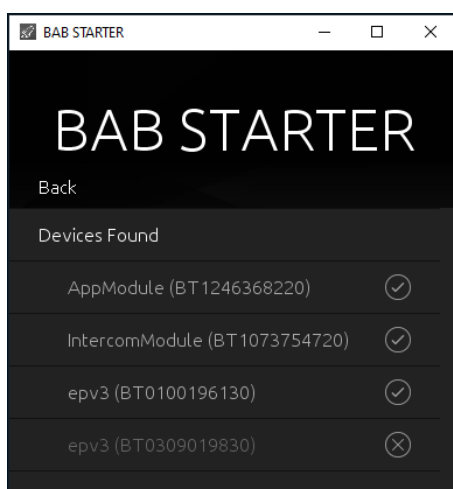


Figure 15: Search for devices

The devices marked as "unreachable" can still be selected to display the current network configuration, installed firmware version name and serial number under "Details". For new devices in the system that only have the wrong IP, you can make appropriate changes to the network settings.

**Note: The device name can be adapted individually in each device and does not have to correspond to the name of the device. For example, the EIBPORT device name can be "My home".**



### 3.3 ADD DEVICES MANUALLY...

If you would like to add a device to the list that was not found in the devices search (e.g. devices that are available via an internet connection), this is possible here. To this end, enter the host name (or permanent IP address) and the http port of the device and click on "Connect". When using externally connected devices be more careful with the security of the system. In this respect, you should only integrate devices that are in a secure area, e.g. communicate via VPN. There is separate hardware documentation for the use of VPN connections and their configuration.

**Please take care that entered IP address is without „http(s)://“, otherwise no connection will be established!**

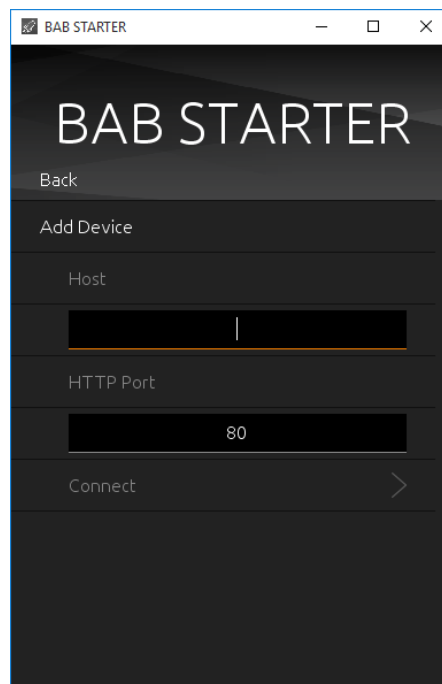


Figure 16: Add device manually...

### 3.4 TEST VIRTUAL DEVICES...

In order to be able to manage and test virtual devices in a separate environment, there is the "Test virtual devices ..." submenu. You will receive the required details of the virtual devices when they are activated. On our WEB page you can e.g. request a virtual EIBPORT by email. There is separate documentation for the device so that it is not dealt with in more detail here.

## 3.5 SETTINGS

---

Here you can find the settings for the BAB STARTER program (Device-specific settings are effected elsewhere).

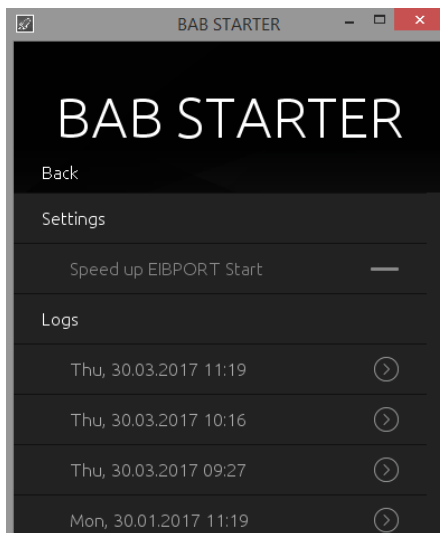


Figure 17: BAB STARTER settings

### SPEED UP EIBPORT START

---

The cache serves to buffer content in order to accelerate the starting of Java-based software components (**CUBEVISIONMODULE / EIBPORT**). If content has been transferred erroneously, deactivating the cache serves to reload the content.

### LOGS

---

Here it is possible look at log messages of the BAB STARTER. If you have problems while starting java based applications of the different devices, they could be important in order to provide you support. The log messages are saved as text files.





## 3.6 ABOUT BAB STARTER

---

In the menu item "About BAB STARTER", information about the software and the manufacturer is displayed.

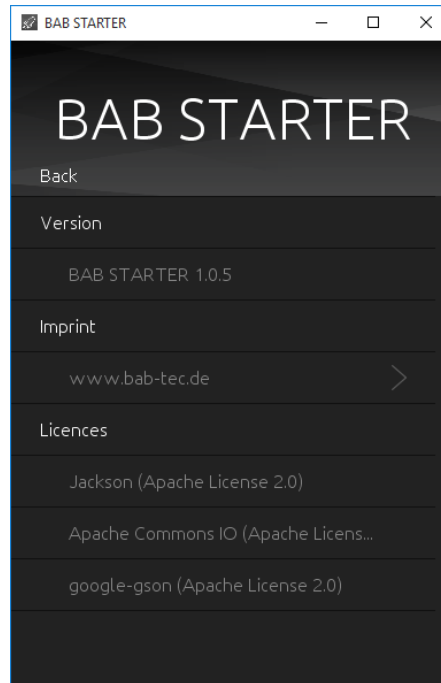


Figure 18: About BAB STARTER

### **Version**

Shows the current BAB STARTER version.

### **Imprint**

Refers to the imprint of BAB TECHNOLOGIE GmbH.

### **Licences**

Open-source licences used in BAB STARTER.

## 4 DEVICES MENU

If the BAB STARTER finds devices in the network or if devices were added manually these appear in the device list with the individual device name and the series number under "Devices" (if a device has already been called up) or under "Search for devices" > "Devices found" (if no device has been called up so far).

To reach the desired device menu, simply click on the corresponding entry.

**Note: The available device settings differ depending on the device type accessed.**

### 4.1 DEVICE MENU EIBPORT

When an EIBPORT entry is been clicked, the device menu opens. From here you have access to all EIBPORT areas. In case of browser based areas BAB STARTER forwards you towards the standard browser of your operating system. The java based applications are directly opened in BAB STARTER.

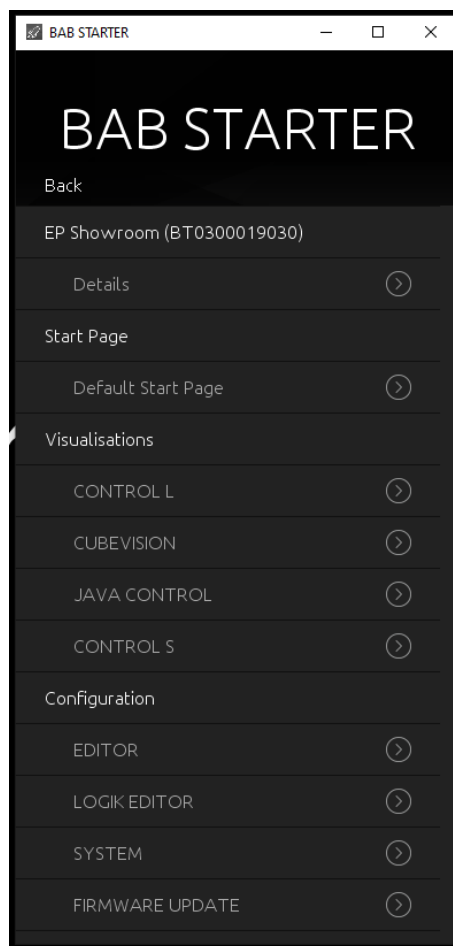


Figure 19: Device menu for EIBPORT

**Note: If there is no connection to the device, the different software (software remodule or application) is not listed.**

#### DEFAULT START PAGE

The selection of the same name can be used to conveniently call up the EIBPORT start page.



## FIRMWARE UPDATE

---

This selection calls up the necessary web interface for a firmware update.

### 4.1.1 JAVA BASED APPLICATION OF THE EIBPORT

---

- Java CONTROL = Java visualisation of EIB**PORT**
- EDITOR = Access to the Editor window with Visualisation Editor, Job Editor, CUBEVISION Editor
- SYSTEM = Access to the "ConfigTool" of the EIB**PORT** to set up network, phys. Address and so on.

### 4.1.2 DETAILS FOR EIBPORT

---

Under the individual device name, the series number, firmware, the host name / IP address ("Host") and the subnet mask are displayed.

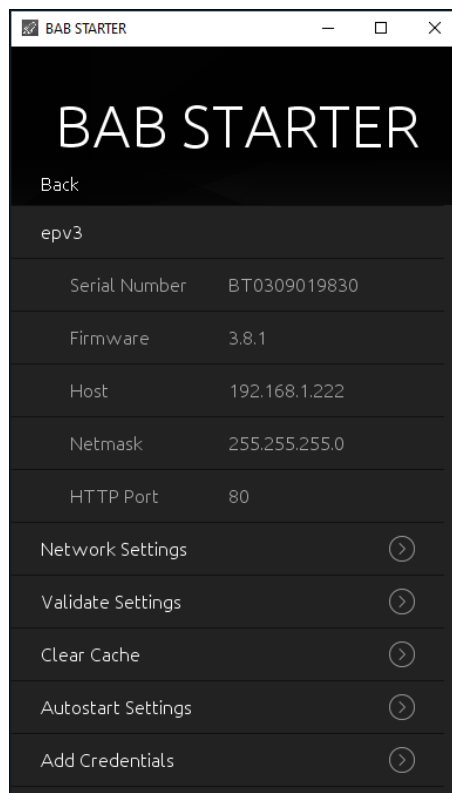


Figure 20: Device menu for EIBPORT – details

## CHANGE NETWORK SETTINGS

---

This menu is used to change the IP address settings of the EIB**PORT**. These include:

- EIB**PORT** name (individual device name)
- DHCP active / not active
- IP address
- Subnet mask
- Gateway
- DNS server 1 – 3

To adopt the settings ("Adopt settings"), the EIB**PORT** string and the admin user password must be entered correctly.



## CHECK SETTINGS

---

Once the EIB**PORT** string and the admin password have been entered, the most important system-related settings of EIB**PORT** are reviewed. These include:

- **Gateway** = It is checked whether the standard gateway entered is accessible from the EIB**PORT** (The gateway is required so that the EIB**PORT** can communicate externally and so that it can be accessed from outside).
- **DNS server #1 - #3** = It is checked whether the DNS server addresses can be reached (The DNS server addresses are required to enable a name dissolution; if this is not available, the EIB**PORT** cannot dissolve host names into IP addresses. Several services depend on this).
- **Ping external IP** = An external IP address is addressed via PING command from the EIB**PORT** (Checks whether communication with an external address can take place).
- **Ping external host** = An external host address is addressed from the EIB**PORT** via PING (Checks whether communication with an external address including a name dissolution can take place).
- **NTP server #1 - #3** = The accessibility of the NTP server entries is checked.
- **At least 2 tunneling addresses** = It is checked whether at least 2 addresses are set under "individ. address for KNXnet/IP tunneling" (Here, at least 2 addresses are required to allow a KNXnet/IP tunneling connection to be created from the ETS 5).
- **Job: date/time receiver** = Checks whether jobs were created for the date and time synchronisation (This or the use of NTP time servers is important to ensure a correct system time).
- **Time synchronised** = Synchronises the system time of the EIB**PORT** automatically.

## CLEAR CACHE

---

With this menu item you have the possibility to delete the cache files of the device from your PC in the directory of the BAB STARTER. Otherwise you will find these files:

### Windows

Search for "BAB STARTER" in Windows Explorer using the search function and then click on the entry "bab-starter" >C:\Users\Username\AppData\Local\Temp<. Open the "cached" folder.

If only one device is managed with the BAB STARTER, this folder contains only one subfolder with the serial number of the device (BTxxxxxxxxxxx) and the current log files. If multiple devices are managed, a subfolder is created for each device. Delete a folder in order to delete the cached files for this device.

### MAC OS X

Clearing the cache of the BAB STARTER

The BAB STARTER creates a folder "eibPort" in the user directory. In this folder the folders with the serial number of the device are created. Delete the folder with the corresponding serial number and cache files are deleted.

## AUTOSTART SETTINGS

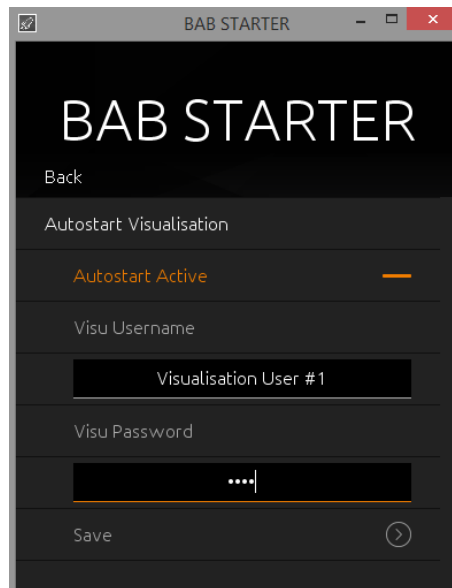
---

With the help of the Autostart Settings it is possible to access the EIB**PORT** java visualisation directly while starting BAB STARTER. In this way it is for instance possible to start the visualisation with the start of a Touch Panel at once.

**Note: The autostart setting creates a link between the BAB STARTER and the autostart folder, directory: C:\Users\<user name>\AppData\Roaming\Microsoft\Windows\Start Menu\Programs\Startup or directly available: shell:startup**

**In order to set up the Autostart, please proceed as follows.**

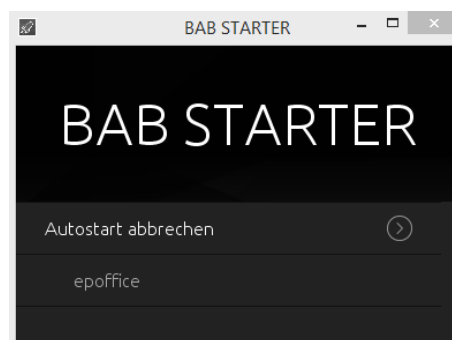
- Enable the Autostart with the Button “Autostart Active”
- Enter Username and Password of the visualisation user. If there should not be any selection of visualisation projects no more, please use an user account which only has access to one visualisation project.

**Figure 21: Activate autostart**

- Press on “Save”. The autostart function will be active with the next start of BAB STARTER.
- No move the BAB STARTER Icon into the Autostart folder of your computer (Windows: Autostart, MAC “Login items” of the corresponding user).

**Disable Autostart**

If BAB STARTER is started in the autostart mode, a display with the opportunity to abort the autostart procedure is been shown for 5 seconds. BAB STARTER will then proceed in its normal mode.

**Figure 22: Disable autostart****DEPOSIT CREDENTIALS**

The registration data stored here is stored locally in the BAB STARTER so that access can take place without the user data having to be entered again.

## 4.2 DEVICE MENU CUBEVISION MODULE

If a **CUBEVISIONMODULE** is called up with the BAB STARTER, the menu appears as follows:

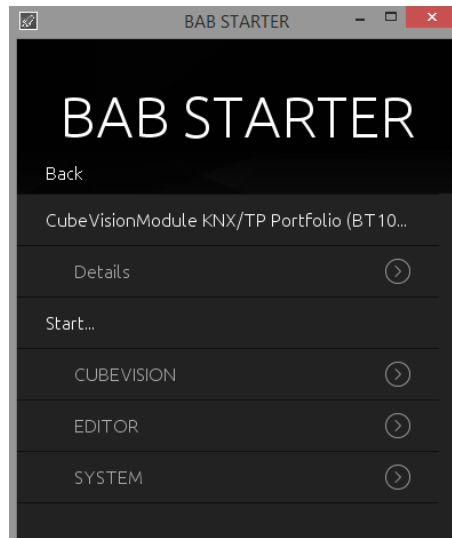


Figure 23: Device menu for CUBEVISIONMODULE

### 4.2.1 DETAILS FOR CUBEVISIONMODULE

Under the individual device name, the series number, firmware, the host name / IP address ("Host") and the subnet mask are displayed.



Figure 24: Device menu for CUBEVISIONMODULE – details

#### CLEAR CACHE

With this menu item you have the possibility to delete the cache files of the device from your PC in the directory of the BAB STARTER. Otherwise you will find these files:



## Windows

Search for "BAB STARTER" in Windows Explorer using the search function and then click on the entry "bab-starter" >C:\Users\Username\AppData\Local\Temp<. Open the "cached" folder.

If only one device is managed with the BAB STARTER, this folder contains only one subfolder with the serial number of the device (BTxxxxxxxxxxx) and the current log files. If multiple devices are managed, a subfolder is created for each device. Delete a folder in order to delete the cached files for this device.

## MAC OS X

Clearing the cache of the BAB STARTER

The BAB STARTER creates a folder "eibPort" in the user directory. In this folder the folders with the serial number of the device are created. Delete the folder with the corresponding serial number and cache files are deleted.

## CHANGE NETWORK SETTINGS

---

This menu is used to change the IP address settings of the **CUBEVISIONMODULE**. These include:

- **CUBEVISIONMODULE** name (individual device name)
- DHCP active / not active
- IP address
- Subnet mask
- Gateway
- DNS server 1 – 3

To adopt the settings ("Adopt settings") the admin user password must be entered correctly.

## STORE REGISTRATION DATA

---

Optional menu item in **CUBEVISIONMODULE**; the registration data stored here is stored locally in the BAB STARTER so that access can take place without the user data having to be entered again.

## 4.2.2 DEVICE MENU FOR CUBEVISION MODULE – START...

---

The "Start..." menu offers access to all the important **CUBEVISIONMODULE** functions. Functions that require a Java VM are started by the BAB STARTER directly without a Java VM having to be installed and specially configured. The following **CUBEVISIONMODULE** functionalities can be accessed.

- **CUBEVISION** = The CUBEVISION view of the **CUBEVISIONMODULE** is opened in the browser
- **Editor** = Opens the **CUBEVISIONMODULE** Editor, WITHOUT a Java installation being required.
- **Configuration** = Opens the **CUBEVISIONMODULE** configuration in a browser window

**Note:** Please note that you require the relevant user data for the different **CUBEVISIONMODULE** levels.

## 4.3 DEVICE MENU FOR WEB-BASED BAB TECHNOLOGIE DEVICES

For all web-based devices apart from **EIBPORT** and **CUBEVISIONMODULE**, the BAB STARTER displays the series number, the firmware version and the current (host / IP) address. A direct connection from the devices is not possible. To connect to such a device, simply enter the address indicated under "Host" in your browser address line. You must proceed in this manner with the following devices:

- **APPMODULE**
- **DATALOGGER**
- **KNXCONVERTER**
- **AUDIOMODULE**
- **AUDIOSERVER**
- **INTERCOMMODULE**
- **LINKMODULE**
- **PVMODULE**
- **ELMMODULE**
- **DUODMX GATEWAY**
- **FACILITYMASTER**

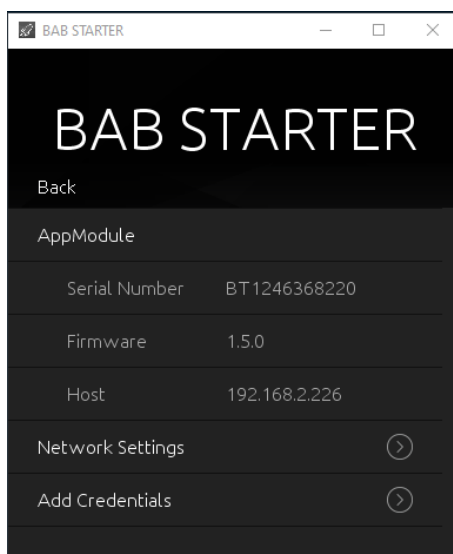


Figure 25: Device menu for web-based BAB TECHNOLOGIE devices

### CHANGE NETWORK SETTINGS

This menu is used to change the IP address settings of the MODULE. These include:

- Name (individual device name)
- DHCP active / not active
- IP address
- Subnet mask
- Gateway
- DNS server 1 – 3

To adopt the settings ("Adopt settings") the admin user password must be entered correctly.

### STORE REGISTRATION DATA

Optional menu item: The registration data stored here is stored locally in the BAB STARTER so that access can take place without the user data having to be entered again.